

# FORKFUL OF FACTS

Finnish Food Industry Statistics 2015



Ruokatieto

## FOR THE READER

Forkful of Facts – Food Industry Statistics contains a wide variety of figures concerning Finnish agriculture, covering the entire food chain, from field to fork.

Forkful of Facts presents figures about food chain practices and value-adding factors, which can be utilised to enhance the competitiveness of the Finnish food chain, which relies on responsible practices. The statistics have been divided under headings environment, product safety, nutrition, work and well-being at work, animals and animal well-being, locality and economy. This division follows the seven dimensions of food chain sustainability. Nevertheless, it must be noted that the selected statistics do not measure the level of sustainability, as research on the subject is still at an early stage.

The latest information in this Forkful of Facts is mainly from 2014. We have also included information from earlier years as well as international data for comparison. Some new tables have been introduced this year, particularly for data relating to locality and economy.

A paper copy of Forkful of Facts is available in three languages (Finnish, Swedish, English) and it is also available online at [www.ruokatieto.fi/tietohaarukka](http://www.ruokatieto.fi/tietohaarukka).



## TABLE OF CONTENTS

### General information

Mean precipitation 1981–2014	3	Ownership of agricultural and horticultural enterprises	14
Mean temperatures 1981–2014	3	Agricultural labour force	14
Weather conditions during the growing season	3	Specialization in agricultural and horticultural enterprises	15
Households by size	4	Income of agricultural and horticultural enterprises per production sector	15
The population of Finland	4	Other entrepreneurship on agricultural and horticultural enterprises	16
The population density of Finland	4	Use of arable land	17
The average size of a household	4	Crop	18
Occupational diseases by industry 2012	5	Agricultural production costs	19
Number of occupational accidents	5	Agricultural gross return	20
Average age and number of agricultural entrepreneurs	5	Beekeeping figures in 2014	21
Most important reasons for retirement on disability pension among agricultural entrepreneurs	6	Profitability coefficient on the Finnish farms 2001–2014 p.	21
Gross domestic product	6	Entrepreneurial income	22
Gross value of production by branch of industry	7	Producer prices	22
Value added by branch of industry	7	Livestock	23
Labour force	8	Average number of animals in farms	23

### Agriculture

Organic production area and number of organic farms	9	Protection of animals inspections based on sample	24
Number of organic producers	9	Prevention of cruelty to animals inspections in commercial animal deliveries	24
Use of arable land on organic farms	10	Implementation of animal welfare on pig and cow farms	25
Organic production	11	Responsible production limit values in pork production	26
Market share of organic produce	11	Use of antimicrobial agents in food-producing animals	26
Agricultural environmental aid	11	Farms receiving animal well-being subsidies	26
Volume of pesticides sales	12	Henneries 2014	27
Pesticide residue control 2014	12	Barn types 2014	27
Substituting for agricultural entrepreneurs	13	Grazing and time outdoors	27
Number of agricultural and horticultural enterprises	13	Milking machines 2014	28
Change in number of agricultural and horticultural enterprises	14	Average yield per cow and milk contents 2014	28

## Food

Food consumption per capita in Finland and in the EU	29	Meat	48
Average daily intake of energy-yielding nutrients and fibre and percentage out of the total energy intake	30	Milk products and edible fats	49
Most important sources of energy and nutrients	31	Bread grain	50
Actual vitamin and mineral intake compared to the recommendations	32	Fish	50
Finns' daily meals	33	Fish consumption	51
Health behaviour	34	Eggs	51
Level of self-sufficiency in food products	34	Vegetables and fruit	52
Share of the economy for food processing in the regions	35	Berries and mushrooms	53
Food manufacturers by sector	36	Non-compliant foods 2014	54
Food industry key sectors	37	Causes of non-compliance 2014	55
Import and export of foodstuffs	38	Veterinary medicinal product residues and other substances in live animals and animal products	55
Food exports by country	40	Food control figures 2014	56
Food exports by country and product group 2014	41	Number of recalls	57
The share of food industry's R&D costs	42	Reasons for product withdrawals 2014	57
Consumption expenditure	42	Foodborne and waterborne outbreaks and number of persons affected 2014	57
Food expenditure	43	Foodborne and waterborne outbreaks by disease-causing agent 2014	58
Real price development of food in Finland	43		
Retail prices	44	<b>Daily Consumer Goods Trade and Institutional Kitchens</b>	
The most common value-added tax on food in the EU-countries 2014	45	Number of shops by shop type	59
Price indexes 2013	46	Sales of daily consumer goods by shop type	59
Households consumption of food and non-alcoholic beverages	47	Number of institutional kitchens by sector	60
		Number of portions prepared in institutional kitchens	60
		Share of organic products in public catering	60

Explanation of symbols:

p. = preliminary data

.. = data not available

## GENERAL INFORMATION

### MEAN PRECIPITATION 1981–2014, MM

	spring	summer	autumn	winter
Helsinki-Kaisaniemi	106	202	203	149
Jyväskylä	114	231	178	126
Oulu	86	191	135	96
Sodankylä	100	194	138	101

Source: Finnish Meteorological Institute

### MEAN TEMPERATURES 1981–2014, °C

	spring	summer	autumn	winter
Helsinki-Kaisaniemi	4.4	16.3	6.7	-3.5
Jyväskylä	2.4	14.8	3.7	-7.6
Oulu	1.6	14.7	3.3	-8.5
Sodankylä	-1.0	12.7	0.0	-12.5

Source: Finnish Meteorological Institute

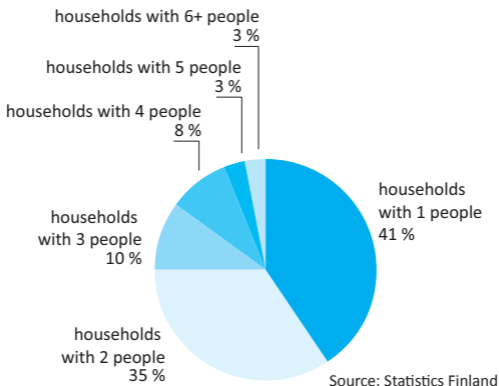
### WEATHER CONDITIONS DURING THE GROWING SEASON

	Effective temperature comparative period			Precipitation comparative period		
	2014	2013	1981–2010	2014	2013	1981–2010
Jokioinen	1 476	1 502	1 307	340	283	341
Kauhava	1 380	1 442	1 185	307	309	286
Oulu	1 274	1 377	1 170	296	290	257
Sodankylä	1 004	1 129	795	266	204	227

Source: Finnish Meteorological Institute

## HOUSEHOLDS BY SIZE

in 2013 there were 2 622 500 households



The population of Finland on the 31st of December 2014 was 5 471 753.

Source: Population Register Centre

On the first of January 2015 the population density of Finland was approximately 18.0 people per square kilometer.

In the year 2013 the average size of a household was approximately 2.05 people.

Source: Statistics Finland

## OCCUPATIONAL DISEASES BY INDUSTRY 2012

Occupational diseases	pcs	100 000 per employed
Crop farming, animal husbandry, game husbandry	299	483
Production of foodstuff	161	502

Source: Finnish Institute of Occupational Health

## NUMBER OF OCCUPATIONAL ACCIDENTS

Occupational accidents <sup>1)</sup> per 100,000 working in the industry	2005	2010	2012	2013
Agricultural entrepreneurs	5 962	4 882	4 953	4 994
Food industry employees <sup>2)</sup>	7 696	6 919	..	..
All occupations <sup>3)</sup>	2 581	2 103	..	..

Source: Statistics Finland

<sup>1)</sup> occupational accidents leading to at least 4 days of incapacity for work

<sup>2)</sup> occupational accident data by occupation next available for the 2015 reference year data once the Federation of Accident Insurance Institution (FAII) adopts the ISCO-08 classification

<sup>3)</sup> occupational groups with at least 10,000 employees

## AVERAGE AGE AND NUMBER OF AGRICULTURAL ENTREPRENEURS

	1995		2005		2014	
	aver. age	number	aver. age	number	aver. age	number
Agricultural entrepreneurs	45.1	142 000	47.6	90 000	48.6	68 000
Start-up entrepreneurs <sup>1)</sup>	29.9	70	29.8	760	28.2	570
Retiring entrepreneurs <sup>2)</sup>	60.2	6 600	60.8	3 900	62.4	2 000
Recipients of farmers' early retirement aid <sup>3)</sup>	57.8	560	58.6	1 420	58.1	440

Source: Farmers' Social Insurance Institution Mela

<sup>1)</sup> entrepreneurs taking up farming through succession within the farmers' early retirement aid scheme

<sup>2)</sup> covering those retiring on old-age, disability and unemployment pension

<sup>3)</sup> those giving up farming through succession within the farmers' early retirement aid scheme

**MOST IMPORTANT REASONS FOR RETIREMENT ON DISABILITY PENSION AMONG AGRICULTURAL ENTREPRENEURS**

%	1995	2005	2013	2014
Respiratory diseases	7	3	2	2
Mental illnesses	14	20	17	18
Musculoskeletal disorders	46	47	46	43
Injuries, poisonings, etc.	6	9	10	10
Cardiovascular diseases	15	8	8	8
Tumours	..	..	7	6
Nervous system disorders	..	..	5	7

Source: Farmers' Social Insurance Institution Mela

% = share of the entire year's disability pensions among agricultural entrepreneurs

**GROSS DOMESTIC PRODUCT**

Distribution by field of activity %	2005	2010	2013 p.	2014 p.
Agriculture, forestry and fishing	2.6	2.7	2.7	2.8
of which agriculture	1.1	0.9	1.0	0.8
Manufacturing	24.3	19.5	16.6	16.7
of which food industry	1.5	1.3	1.3	1.2
Construction	6.4	6.4	6.4	6.2
Wholesale and retail trade <sup>1)</sup>	9.8	9.4	9.9	9.6
Transportation and storage	5.7	5.1	5.1	5.0
Accommodation and food service activities	1.6	1.6	1.6	1.6
Information and communication	5.0	5.0	5.3	5.5
Financial and insurance activities	2.7	2.6	2.5	3.0
Real estate activities	10.2	11.2	11.9	12.3
Human health and social work activities	8.2	9.3	10.0	10.0
Other services	23.4	27.1	28.0	27.3
<b>Total</b>	<b>100</b>	<b>100</b>	<b>100</b>	<b>100</b>

<sup>1)</sup> incl. repair of motor vehicles and motorcycles

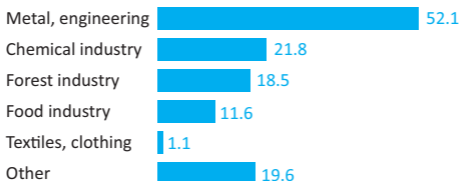
Gross value added at basic prices. billion EUR	143.6	163.6	174.4	176.7
GDP in purchasers' values. billion EUR	164.4	187.1	202.7	205.2

Source: Statistics Finland, National Accounts, TOL 2008



## GROSS VALUE OF PRODUCTION BY BRANCH OF INDUSTRY

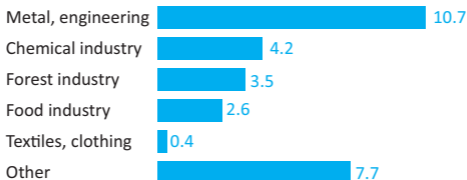
2012, gross value of production 124.7 billion euro



Source: Statistics Finland, Standard industrial classification TOL 2008

## VALUE ADDED BY BRANCH OF INDUSTRY

2012, value added total 29.1 billion euro



Source: Statistics Finland, Standard industrial classification TOL 2008

## LABOUR FORCE

Field of activity	2000	2005	2013	2014	2014
	%	%	%	%	1 000 persons
Agriculture, forestry, fishing, mining and quarrying	6	5	4	4	109
of which agriculture	5	4	3	3	76
of which forestry	1	1	1	1	26
Industry <sup>1)</sup>	20	18	15	15	359
of which food and beverage industry	2	2	2	2	37
of which other industry	18	17	14	13	323
Construction	6	7	7	7	169
Wholesale and retail trade <sup>2)</sup>	12	12	12	12	290
Transport and storage	7	6	6	6	140
Accommodation and food service activities	3	3	4	4	86
Other services	45	48	51	52	1282
Unknown field of activity	0.3	0.2	0.4	0.4	11
Employed total in thousands	100	100	100	100	2 447
Total labour force in thousands	2 335	2 401	2 457	2 447	2 447
of which unemployed %	2 589	2 621	2 676	2 679	2 679
	9.8	8.4	8.2	8.7	8.7

Source: Statistics Finland, Standard industrial classification TOL 2008

<sup>1)</sup> including electricity, water supply, waste management etc.

<sup>2)</sup> including repair of motor vehicles and motorcycles

### ORGANIC PRODUCTION AREA AND NUMBER OF ORGANIC FARMS

	1995	2005	2013	2014
Certified organic area, ha	23 139	135 223	170 462	188 720
In-conversion area, ha	21 557	12 364	35 708	23 933
Total organically farmed area, ha	44 696	147 588	206 170	212 653
Percentage of organically farmed area of the total area of production %	..	6.7	9.0	9.4
Farm size, ha/farm	20	34	49	51
Farms, number	2 793	4 296	4 215	4 180

Source: Finnish Food Safety Authority Evira

### Locality

### NUMBER OF ORGANIC PRODUCERS

	2008	2011	2013	2014
Organic primary production <sup>1)</sup>	3 758	3 975	4 145	4 119
from which organic animal farms	511	643	814	825
Organic foodstuff producers	401	487	621	651
Organic feedstuff producers	16	33	44	45
Organic seed packing plants	..	31	28	25
In total	4 175	4 526	4 845	4 840

Source: Finnish Food Safety Authority Evira

<sup>1)</sup> includes, in addition to farms, also greenhouse, mushroom farms and beekeepers

## USE OF ARABLE LAND ON ORGANIC FARMS

<b>Certified organic area, ha</b>	<b>1995<sup>1)</sup></b>	<b>2005</b>	<b>2013</b>	<b>2014</b>
Grass	11 431	60 195	81 999	91 482
Cereals	8 158	46 362	49 760	57 093
wheat	724	6 629	6 303	6 861
rye	1 616	4 594	3 188	4 904
barley	2 118	6 760	6 450	7 166
oats	2 447	23 134	24 350	24 047
mixed : straw grains	302	2 798	2 264	2 859
mixed: legumes+straw grains	927	1 842	7 204	11 256
Peas	120	1 289	901	1 205
Buckwheat	23	185	271	328
Caraway	9	355	120	180
Flax	22	277	51	98
Turnip rape	64	2 419	2 042	2 271
Potatoes	423	440	446	466
Vegetables, open land	197	211	241	268
Greenhouse vegetables	2	9	9	9
Leafherbs	17	16	20	69
Berries and fruits	256	800	612	701
Other crops	395	3 672	12 270	11 772
Fallow	2 022	19 178	21 189	22 754
<b>Total</b>	<b>23 139</b>	<b>135 223</b>	<b>169 931</b>	<b>245 788</b>

Source: Finnish Food Safety Authority Evira

<sup>1)</sup> Åland not included

Figures for the traditional use of arable land are on page 17.

## ORGANIC PRODUCTION

	2007 mil- lion kg	% of total produc- tion	2013 mil- lion kg	% of total produc- tion	2014 million kg	% of total produc- tion
Beef	..	..	2	2.4	2.1	2.6
Pork	..	..	0.7	0.4	0.7	0.4
Lamb	..	..	0.2	18.2	0.2	22.4
Poultry	..	..	0.03	0	0.08	0.1
Eggs	1.1	2	2.5	4.1	2.8	4.5
Bread grain (wheat and rye)	18.2	2.1	17.2	1.9	23.9	2.1
Potato	0.3	0	6.9	1.1	4.9	0.8
Peas	1.2	18.8	1.6	25.8	2.7	18.9
Milk. million litres	26.8	1.2	41.2	1.9	47.2	2.1

Source: Suomen Gallup Elintarviketieto Oy, Pro Luomu,  
Natural Resources Institute Finland

In 2014, the market share of organic produce was 1.7%.

Source: Pro Luomu

## AGRICULTURAL ENVIRONMENTAL AID

	number	% of farms	% of arable area
Farms committed to environmental aid	52 663	90	95

Source: Agency for Rural Affairs

## VOLUME OF PESTICIDES SALES

	1995	2005	2012	2013
Active ingredient sales (tonnes)				
fungicides	114	255	198	217
agricultural insecticides	57	47	31	26
agricultural herbicides	791	1 077	1 224	1 133
growth regulations	73	52	93	100
Product sales (tonnes)				
fungicides	236	718	704	817
agricultural insecticides	160	147	219	184
agricultural herbicides	1 768	2 639	3 069	2 909
growth regulations	131	107	165	184

Source: Finnish Safety and Chemicals Agency

## Product safety

PESTICIDE RESIDUE CONTROL 2014 <sup>1)</sup>

Source of sample	Random samples	Non-compliant %
Domestic	327	0.0
EU	952	1.1
Outside of EU	1 104	3.5
In total	2 383	2.1

Source: Finnish Food Safety Authority Evira

<sup>1)</sup> samples from fruits, plants, grains, processed foodstuffs, baby food and products of animal origin

## SUBSTITUTING FOR AGRICULTURAL ENTREPRENEURS

	2000	2005	2013	2014
MYEL <sup>1)</sup> -insured agricultural entrepreneurs	105 993	90 007	70 448	67 859
Those using annual leave <sup>2)</sup>	45 254	34 719	21 909	20 811
Those using substitutes	14 934	14 624	8 879	8 398
Those using substituting subject to subsidised charge	10 995	13 521	11 979	10 939
Those using substituting subject to total charge	643	314	703	663

Source: Mela

<sup>1)</sup> Farmers' Social Insurance Institution<sup>2)</sup> to receive annual leave, a farmer must have at least four domestic animal units, and they must be a full-time agricultural entrepreneur

## Locality

## NUMBER OF AGRICULTURAL AND HORTICULTURAL ENTERPRISES

Farm size Hectares of arable land	1995 pcs	2005 pcs	2013 <sup>1)</sup> pcs	2014 <sup>1)</sup> pcs	% of farms	% of arable lands
0–5	9 988	5 228	3 297	3 011	6	0
5–10	17 049	8 765	6 114	5 927	11	2
10–15	16 918	8 481	5 832	5 622	11	3
15–25	25 634	13 989	9 692	9 205	17	8
25–50	23 870	19 660	14 430	13 798	26	22
50–75	4 508	7 549	6 954	6 868	13	19
75–100	1 209	3 116	3 602	3 643	7	14
100–150	622	1 990	2 906	2 979	6	16
150–	166	739	1 571	1 722	3	17
Total	99 964	69 517	54 398	52 775	100	100

Source: Natural Resources Institute Finland  
In 1995 farms with over 1 ha arable land<sup>1)</sup> the definition of an agricultural and horticultural enterprise was revised.  
The figures cannot be compared with figures from previous years.

## CHANGE IN NUMBER OF AGRICULTURAL AND HORTICULTURAL ENTERPRISES

Farms	2000	2013 <sup>1)</sup>	2014 <sup>1)</sup>	Change 14/13 %
pcs	78 434	54 398	52 775	-3

Source: Natural Resources Institute Finland

<sup>1)</sup> the definition of an agricultural and horticultural enterprise was revised.  
The figures cannot be compared with figures from previous years.

## OWNERSHIP OF AGRICULTURAL AND HORTICULTURAL ENTERPRISES

Category	1995 pcs	2005 pcs	2013 pcs	2014 <sup>1)</sup> pcs	% farms
Private individuals	86 933	61 477	47 545	45 721	86,6
Heirs	12 468	7 297	5 739	5 811	11,0
State, communes etc.	563	743	1 114	1 243	2,4
Total	99 964	69 517	54 398	52 775	100

Source: Natural Resources Institute Finland

In 1995 farms with over 1 ha of arable land

<sup>1)</sup> the definition of an agricultural and horticultural enterprise was revised.  
The figures cannot be compared with figures from previous years.

## AGRICULTURAL LABOUR FORCE

Labour force in thousands	1995	2005	2013	2014
Farmers	116	73	59	60
of which women	37	22	16	17
Permanent employees	25	20	17	16
of which women	12	9	8	8
Total	141	93	76	76

Source: Statistics Finland



## SPECIALIZATION IN AGRICULTURAL AND HORTICULTURAL ENTERPRISES

Number of farms	1995	2005	2013 <sup>1)</sup>	%	2014 <sup>1)</sup>	%
	Dairy farms	32 480	16 495	8 497	16	8 084
Beef farms	9 394	4 508	3 941	7	3 803	7
Pig farms	6 249	3 165	1 020	2	932	2
Poultry farms	2 239	976	395	1	423	1
Crop farms	42 287	40 960	34 843	64	34 144	65
of which						
grain growing	..	28 563	19 579	36	19 216	36
Others	7 315	3 413	5 702	10	5 389	10
Total	99 964	69 517	54 398	100	52 775	100

Source: Natural Resources Institute Finland

Note: In 1995 farms with over 1 ha of arable land

<sup>1)</sup> The definition of an agricultural and horticultural enterprise was revised.

The figures cannot be compared with figures from 1995 and 2005.

## INCOME OF AGRICULTURAL AND HORTICULTURAL ENTERPRISES PER PRODUCTION SECTOR

	Taxable income total spouses together			Farm economy's income spouses together		
	2005	2011	2012	2005	2011	2012
	€	€	€	€	€	€
Dairy farms	39 878	58 958	61 561	30 734	47 385	49 523
Other cattle farms	38 772	54 099	56 913	19 983	28 777	29 776
Poultry farms	60 272	76 491	82 323	35 880	48 166	53 178
Pig farms	47 593	66 457	67 415	31 980	43 674	44 627
Sheep, goats, horses	40 398	48 374	50 446	4 995	7 271	8 148
Crop farms (grain)	44 271	58 829	60 514	10 397	15 081	15 364
Other crop farms	43 334	54 443	54 773	11 756	14 989	14 657
Other farms	37 542	55 025	55 431	6 533	9 310	9 825
Average	44 008	59 085	61 172	19 032	26 832	28 137

Source: Statistics Finland

## OTHER ENTREPRENEURSHIP ON AGRICULTURAL AND HORTICULTURAL ENTERPRISES

<b>Number of farms</b>	<b>2000 <sup>1)</sup></b>	<b>2005 <sup>1)</sup></b>	<b>2010</b>	<b>2013</b>
Industry	4 786	3 753	2 747	2 245
food processing	1 065	684	479	381
other agricultural products processing	134	152	94	78
timber processing	1 349	889	583	405
making handicrafts for sale	274	277	155	79
energy production	959	1 037	907	855
other industrial production	1 005	714	529	448
Construction industry	<sup>2)</sup>	881	438	344
Trade	1 056	1 298	850	986
Services	15 252	16 547	13 793	12 419
tourism, accommodation and recreation services	2 272	1 865	1 440	1 180
contracting	8 880	10 013	8 896	8 583
other services	4 100	4 669	3 457	2 656
Other primary production	744	1 815	981	808
fish, crayfish etc. farming	112	65	48	51
fur farming	632	510	315	280
reindeer husbandry	<sup>2)</sup>	573	365	310
fishing industry	<sup>2)</sup>	144	104	62
other primary production	<sup>2)</sup>	523	149	103
Farms whose line of business is unknown			721	..
<b>Number of farms with other entrepreneurship</b>	<b>21 838</b>	<b>24 294</b>	<b>19 530</b>	<b>16 802</b>

Source: Natural Resources Institute Finland, MTT, Agrifood Research Finland

<sup>1)</sup> figures for 2000 and 2005 do not include horticultural enterprises engaged exclusively in greenhouse production.

<sup>2)</sup> the classification is somewhat different; the industry in question was not included in that particular year

NB The line of business with the largest turnover.

## USE OF ARABLE LAND

<b>In thousands</b>	<b>1995 1 000 ha</b>	<b>2005 1 000 ha</b>	<b>2013 1 000 ha</b>	<b>2014 1 000 ha</b>
Grassland	755	620	650	652
Cereals, total	978	1 188	1 179	1 193
wheat	101	215	231	272
rye	21	14	12	24
barley	516	595	533	532
oats	329	346	367	326
mixed grain	11	16	33	37
other cereals	1	1	2	2
Oil plants	85	77	53	44
Sugar-beets	35	31	12	14
Potatoes	36	29	22	22
Other crops	29	49	54	58
Area in production	1 918	1 993	1 969	1 983
Fallow <sup>1)</sup>	223	241	254	247
Cultivated area	2 141	2 235	2 223	2 230
drained area	1 361 <sup>2)</sup>	1 290	..	..

Source: Natural Resources Institute Finland, The Finnish Field Drainage Association

<sup>1)</sup> including managed, uncultivated fields in 2013 and 2014

<sup>2)</sup> includes drained field area that has been removed from cultivation

	<b>1995 ha</b>	<b>2005 ha</b>	<b>2013 ha</b>	<b>2014 ha</b>
Mean arable land	21.7	33.0	41.5	43.0

Source: Natural Resources Institute Finland

## CROP

	1995	2005	2013	2014
<b>Wheat</b>				
area (in 1 000 ha)	101	215	228	267
total yield (M kg)	380	801	869	1088
yield kg/ha	3 770	3 730	3 820	4 070
<b>Rye</b>				
area (in 1 000 ha)	21	14	12	24
total yield (M kg)	58	32	26	75
yield kg/ha	2 770	2 290	2 090	3 160
<b>Barley</b>				
area (in 1 000 ha)	516	594	494	497
total yield (M kg)	1 764	2 103	1 904	1 855
yield kg/ha	3 420	3 540	3 850	3 730
<b>Oats</b>				
area (in 1 000 ha)	329	345	344	305
total yield (M kg.)	1 097	1 073	1 197	1 039
yield kg/ha	3 330	3 110	3 480	3 410
<b>Sugar-beets</b>				
area (in 1 000 ha)	35	31	12	14
total yield (M kg)	1 110	1 181	480	626
yield kg/ha	31 900	37 870	40 190	45 820
<b>Oil plants</b>				
area (in 1 000 ha)	85	77	53	43
total yield (M kg)	128	106	80	62
yield kg/ha	1 500	1 380	3 160	3 140
<b>Peas</b>				
area (in 1 000 ha)	5	4	4	6
total yield (M kg)	11	8	11	14
yield kg/ha	2 420	93	2 570	2 540
<b>Potatoes</b>				
area (in 1 000 ha)	36	29	22	22
total yield (M kg)	798	743	622	600
yield kg/ha	22 110	25 700	28 120	27 300
<b>Vegetables</b>				
total yield (M kg)	234	248	254	269
tomatoes	31	38	38	40
cucumber (greenhouse)	24	32	36	38
cabbage	24	19	22	24
carrots	61	67	71	74
onions	17	21	23	26
<b>Potted vegetables (M pcs)</b>	30	64	97	108

Source: Natural Resources Institute Finland

## AGRICULTURAL PRODUCTION COSTS

	2000 MEUR	2005 MEUR	2013 MEUR	2014 p. MEUR
Material costs	1 525	1 628	2 235	2 072
Fertilizer, lime	193	185	285	267
Other crop production costs	264	324	388	383
Fuel and lubricants	189	207	341	308
Electricity	114	102	207	194
Forage costs	482	454	620	544
Livestock costs	282	357	395	375
Farm operating costs <sup>1)</sup>	318	314	536	463
Machinery cost	757	885	1 104	1 095
Depreciation of machines	445	545	595	594
Other machinery costs	311	340	508	501
Building costs	301	329	379	377
Depreciation of buildings	237	273	306	305
Other building costs	64	57	73	73
Other cost	641	785	921	924
Insurance cost paid	227	262	318	311
Fixed rents paid	82	104	150	161
Other depreciations	44	45	50	50
Other costs	288	373	403	402
Wages costs	1 493	1 771	1 482	1 434
Wages paid	190	180	236	234
Wages claim	1 303	1 591	1 246	1 200
Interest costs	598	622	734	720
Interest paid	133	114	111	104
Interest claim of equity	465	508	624	616
Total costs	5 631	6 335	7 391	7 085

Source: MTT Economydoctor. Total Calculation of Agriculture.

Data: MTT Profitability bookkeeping results.

<sup>1)</sup> costs of feedstuff and seeds produced and used on the farm

## AGRICULTURAL GROSS RETURN

<b>Income from</b>	<b>2000 MEUR</b>	<b>2005 MEUR</b>	<b>2013 MEUR</b>	<b>2014 p. MEUR</b>
Crop revenues total	881	720	1 161	1 034
Rye and wheat	84	74	160	151
Barley	171	155	283	235
Oats and other cereals	139	80	163	136
Oilseeds	15	19	48	41
Grass crops	269	218	397	358
Potato and sugar beet	183	158	82	88
Pulses and other crops	21	16	26	25
Livestock revenues total	1 612	1 653	2 154	2 075
Cattle revenue	1 089	1 094	1 510	1 491
Pig production	311	360	373	330
Poultry revenues	204	194	219	201
Sheep and goat revenues	9	6	53	53
Glasshouse and outdoor horticultural revenues total	549	517	614	557
Financial yields	16	14	12	11
Other income	147	168	209	229
The sum of subsidies	1 776	1 966	2 002	1 954
CAP subsidies	385	514	596	554
LFA- and environmental subsidies	721	747	814	811
National and investment subsidies	667	702	584	589
<b>Gross return total</b>	<b>4 981</b>	<b>5 038</b>	<b>6 152</b>	<b>5 860</b>

Source: MTT Economydoctor. Total Calculation of Agriculture.

Data: MTT Profitability bookkeeping results

The value of feedstuff and seeds produced and used on the farm is included in the calculation

## BEEKEEPING FIGURES IN 2014

The Finnish Beekeepers' Association members	2 256
Professional beekeepers <sup>1)</sup>	65
Organic beekeepers	61
Number of productive beehives (overwintered)	60 000
Number of organic beehives	4 915
Yield per beehive, kg	55
Honey production, tonnes	2 600
Imported honey, tonnes	1 605
Honey consumption, tonnes	3 200
Honey consumption, g/person	591
Winter beehive losses <sup>2)</sup> , %	7
Gross profit, beekeeping <sup>3)</sup> , €	27 200

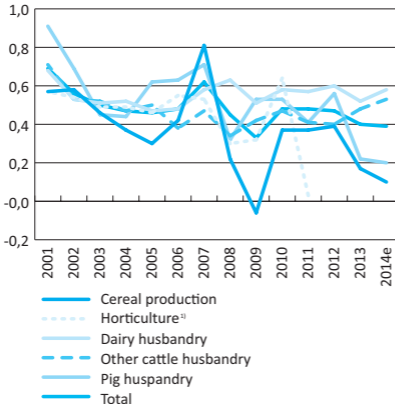
Source: Suomen Mehiläishoitajain Liitto SML ry (The Finnish Beekeepers' Association), Natural Resources Institute Finland

<sup>1)</sup> Beekeepers with more than 100 hives according to hive grant statistics

<sup>2)</sup> Percentage of bees that died during the winter

<sup>3)</sup> in 2013

## PROFITABILITY COEFFICIENT ON THE FINNISH FARMS 2001–2014 p.



Source: Total Calculation of MTT Economic Research

<sup>1)</sup> data for 2012–2014 not available

## ENTREPRENEURIAL INCOME

	2000	2005	2013	2014 p.
	MEUR	MEUR	MEUR	MEUR
Entrepreneurial income	1 114	808	628	592

Source: MTT Economydoctor. Total Calculation of Agriculture.

Data: MTT Profitability bookkeeping results.

## PRODUCER PRICES

Annual average		1995	2005	2013	2014	Change 13/14 %
<b>Milk</b>	c/ltr					
producer price <sup>1)</sup>		31.3	31.5	39.8	40.6	2.1
surplus payment		1.5	2.2	3.8	1.1	-72.3
<b>Meat</b>	€/kg					
beef		2.4	2.1	3.1	3.0	-2.6
pork		1.3	1.3	1.7	1.6	-9.2
chicken		1.1	1.1	1.5	1.5	-3.3
lamb		1.9	2.6	3.9	4.0	2.8
horse		1.3	0.3	..	..	..
<b>Eggs</b>	€/kg	0.5	0.6	1.2	1.0	-14.5
<b>Grain and rootcrops</b>						
wheat <sup>2)</sup>	€/tn	147.0	106.2	200.0	166.9	-16.5
rye <sup>2)</sup>	€/tn	149.5	118.4	218.1	196.6	-9.9
barley <sup>2)</sup>	€/tn	122.3	99.5	175.2	132.8	-24.2
oats <sup>2)</sup>	€/tn	118.4	87.1	168.5	126.3	-25.0
malt <sup>2)</sup>	€/tn	142.1	115.3	210.2	159.2	-24.3
food						
potatoes <sup>3)</sup>	€/100 kg	..	..	23.8	14.6	-38.7
oil plants <sup>2)</sup>	€/tn	..	200.1	408.8	361.7	-11.5

Source: Natural Resources Institute Finland

<sup>1)</sup> 1st class milk 4,3/3,3 %, without production aid

<sup>2)</sup> The basic price paid to farmers, including transportation to the first reception point.

<sup>3)</sup> The price paid to farmers per 100 kg net, delivered to the packing facilities. Does not include early potatoes.



## LIVESTOCK

In thousands	1995	2005	2013	2014
Horses	50	64	75	75
Cattle	1 148	959	912	914
dairy cows	399	319	283	285
suckler cows	29	35	57	58
Sheep	159	87	136	138
ewes	69	52	69	69
lambs and rams	90	35	66	69
Pigs	1 400	1 401	1 308	1 245
sows	161	177	126	121
fattening pigs	451	460	490	464
piglets	476	451	365	362
Poultry	10 358	10 538	11 981	12 577
hens	4 179	3 128	3 432	3 645
broilers	4 276	5 472	6 861	7 341
turkeys	80	495	274	292
Goats	6	7	5	4
Reindeer	208	207	192	187

Source: Natural Resources Institute Finland, Statistics Finland, The Finnish trotting and breeding association

## AVERAGE NUMBER OF ANIMALS IN FARMS

Animals pcs/farms	2012	2013 <sup>1)</sup>	2014 <sup>1)</sup>
Pigs	1 175	1 275	1 336
Cattle	70	73	77
Poultry	32 412	30 331	29 733

Source: Natural Resources Institute Finland

<sup>1)</sup> The definition of an agricultural and horticultural enterprise was revised in 2013. The figure for 2012 has been counted retrospectively. The figures cannot be compared with figures from previous years.

**PROTECTION OF ANIMALS INSPECTIONS BASED ON SAMPLE**

<b>Item</b>	<b>Inspections</b>			<b>Cases of neglect</b>		
	<b>2011</b>	<b>2013</b>	<b>2014</b>	<b>2011</b>	<b>2013</b>	<b>2014</b>
Pigs	52	63	55	13	12	16
Cattle	362	244	200	97	66	46
Poultry	26	20	5	5	3	0
Broiler chickens	..	132	3	..	64	0
Goats	12	9	4	0	1	0
Ducks and geese	8	11	1	0	0	0
Sheep	32	42	12	8	7	0

Source: Finnish Food Safety Authority Evira

**PREVENTION OF CRUELTY TO ANIMALS INSPECTIONS IN COMMERCIAL ANIMAL DELIVERIES**

	<b>2005</b>	<b>2011</b>	<b>2013</b>	<b>2014</b>
Inspections (no.)	451	387	384	418
Cases of neglect (%)	24	16	20	12

Source: Finnish Food Safety Authority Evira

## IMPLEMENTATION OF ANIMAL WELFARE ON PIG AND COW FARMS

	Health care agreement with a vet		Coverage %		At special level <sup>1)</sup>		At national level <sup>2)</sup>		At basic level <sup>3)</sup>		Passive <sup>4)</sup>		Health care visits	
	2013	2014	2013	2014	2013	2014	2013	2014	2013	2014	2013	2014	2013	2014
Pig farms (places of keeping pigs)	1 747	1 528	95	91	64	60	1 456	1 366	80	61	211	101	6 587	6 285
Cow farms	7 548	7 580	57	57	..	..	..	..	..	..	..	..	5 872	5 745

Source: ETT (the Association for Prevention of Animal Diseases), Sikava (Health Classification Register for Pig Farms) and Naseva (Health Classification Register for Cow Farms)

<sup>1)</sup> meets the voluntary special requirements set by the industry for pig breeding farms [www.sikava.fi](http://www.sikava.fi)

<sup>2)</sup> meets the voluntary health care requirements set by the industry

<sup>3)</sup> some of the voluntary national requirements are not met

<sup>4)</sup> empty pens

## RESPONSIBLE PRODUCTION LIMIT VALUES IN PORK PRODUCTION

Period	Farms <sup>1)</sup>		RPI exceeded <sup>1)</sup> , fattening pigs			RPI exceeded <sup>1)</sup> , sows	
	under RPI	exceeded	whole carcass	part-carcass	mortality	whole carcass	mortality
1_2014	96.1	3.9	0.6	1.1	1.4	0.4	0.5
2_2014	94.1	5.9	0.6	1.0	2.2	1.2	0.4

Source: Animal Health ETT, Sikava (health classification register for pig farms)

RPI (responsible production indicator) is part of the national pork production criteria (sikava.fi/terveysluokitus). The values are inspected every six months. The limit for whole carcass condemnation: sows 7% and fattening pigs 1.1%. The limit for part-carcass condemnation: fattening pigs 12%. The limit for mortality: sows 25% and fattening pigs 4%.

<sup>1)</sup> percentage of farms in proportion to all farms

## USE OF ANTIMICROBIAL AGENTS IN FOOD-PRODUCING ANIMALS

	EU/EEA, average			Finland		
	2010 <sup>2)</sup>	2011 <sup>3)</sup>	2012 <sup>4)</sup>	2010	2011	2012
mg/PCU <sup>1)</sup>	131	151	144	25	24	24

Source: The European Medicines Agency EMA, ESVAC

<sup>1)</sup> the sales in mg active ingredient sold per population correction (PCU, population correction unit, calculated by taking into consideration the most common food-producing animal species) Results for EU/EEA were calculated by dividing the total sales of veterinary antimicrobials in all participating countries by the combined PCU of these countries.

<sup>2)</sup> number of participating countries: 19

<sup>3)</sup> number of participating countries: 25

<sup>4)</sup> number of participating countries: 26

## FARMS RECEIVING ANIMAL WELL-BEING SUBSIDIES <sup>1)</sup>

Number of farms	2012	% of farms	2013	% of farms	2014	% of farms
	Beef farms	5 364	38	5006	39	4875
Pork farms	846	47	757	48	715	49

Source: Mavi

<sup>1)</sup> subsidised farms

**HENNERIES 2014**

<b>Hennery type</b>	<b>% of egg-production</b>
Enriched cage	62
Floor	33
Organic	4

Source: Suomen siipikarjaliitto (Finnish Poultry Association)

**BARN TYPES 2014**

	<b>Number of barns</b>	<b>%</b>	<b>Cows</b>	<b>%</b>	<b>Average number of cows/ farm</b>
Tie stall barn	3 966	70	102 719	49	25.9
Free stall barn	1 680	29	108 192	50	64.4
Other	53	1	2 523	1	47.6
<b>Total</b>	<b>5 699<sup>1)</sup></b>	<b>100</b>	<b>213 434</b>	<b>100</b>	<b>37.9</b>

Source: ProAgria

<sup>1)</sup> All cows are not included

Tie stall barn: Cow is connected to stall from its head.

Stall barn: Cows are on the loose in a building where they have separate feeding and resting area. Cows are milked in a milking station or by a robot.

**GRAZING AND TIME OUTDOORS 2014**

<b>Cattle</b>	<b>no.</b>	<b>%</b>
Graze in the summer, time outdoors in the winter	455	7.9
Graze in the summer, indoors in the winter	3 895	67.8
Fenced walking area in the summer, time outdoors in the winter	103	1.8
Fenced walking area in the summer, indoors in the winter	347	6.0
Indoors in the summer and in the winter	946	16.5
<b>In total</b>	<b>5 746</b>	<b>100</b>

Source: ProAgria

## MILKING MACHINES 2014

Milking machine type	Farms	%
Pipeline milking	3 996	67.2
Robotic milking	722	12.1
Herringbone milking stations	628	10.6
Tandem milking stations	395	6.6
Bucket milking machine	94	1.6
Milking from behind stations	64	1.1
Rotary milking stations	15	0.3
Robotic milking and milking station	10	0.2
Other milking stations	23	0.4
In total	5 947	100

Source: ProAgria

## AVERAGE YIELD PER COW AND MILK CONTENTS 2014

Breed	Cows number	Average output kg/cow	Milk contents. %			
			Pro-tein	Fat	ECM <sup>1)</sup>	Cells <sup>2)</sup>
Ayrshire	132 627	8 749	3.44	4.27	9 137	164
Holstein	95 839	9 707	3.31	3.96	9 689	187
Finncattle	2 723	6 104	3.44	4.39	6 450	186
Eastern Finncattle	366	3 783	3.44	4.24	3 944	194
Western Finncattle	1 818	6 777	3.45	4.43	7 192	183
Northern Finncattle	539	5 410	3.39	4.26	5 649	198
Jersey	420	7 958	3.63	4.84	9 006	165
Other	154	7 820	3.39	4.08	8 040	144
All	231 763	9 112	3.38	4.13	9 333	174

Source: ProAgria

<sup>1)</sup> energy-corrected milk output (milk's butterfat, protein and lactose content is taken into account)

<sup>2)</sup> somatic cell count, geometric mean

## FOOD

Nutrition

### FOOD CONSUMPTION PER CAPITA IN FINLAND AND IN THE EU

Consumption kg/capita	1995	2005	2011	2013	EU-27 <sup>1)</sup>	2014 p.
Grain	69.8	78.8	78.8	80.0	124.9	80.0
Potatoes	59.6	62.0	..	52.3	71.9	52.3
Meat, total <sup>3)</sup>	60.3	73.0	77.6	77.1	82.5	76.6
beef and veal	18.8	18.6	18.6	18.4	15.7	18.7
pork	32.0	33.5	36.4	35.6	40.4	34.6
poultry meat <sup>3)</sup>	9.0	16.1	18.2	19.5	21.7	20.1
other meat	0.6	4.8	4.4	3.6	4.8	3.2
Liquid milk prod- ucts, total (litres)	198.1	189.7	183.8	181.4	240.1 <sup>2)</sup>	178.4
milk	145.6	134.6	127.6	132.2	..	130.9
sour milk products	37.1	36.8	40.7	37.3	..	35.3
cream	6.3	5.8	6.3	6.7	4.0	6.5
Butter	5.2	2.7	4.1	4.4	3.7	3.9
Vegetable oils	..	..	..	5.2	..	5.2
Cheese	15.3	18.6	22.5	23.2	..	24.9
Ice cream (litres)	14.1	14.0	12,3	..	..	..
Eggs	11.7	9.3	10.0	10.7	12.0	10.8
Sugar	35.4	32.0	30.1	28.9	33.3	29.5
Fruit	75.9 <sup>4)</sup>	75.9	58.2 <sup>5)</sup>	58.4 <sup>5)</sup>	100.1 <sup>4)</sup>	61.2 <sup>5)</sup>
Vegetables	61.7	68.4	..	61.2	115.8	65.3
Fish (gutted)	14.0	14.1	15.2	..	..	..
Coffee (roasted)	8.3	9.6	12.7	10.0	4.8	9.5
Soft drinks (litres)	45.8	52.0	56.0	45.5	..	44.4
Beer (litres) <sup>6)</sup>	82.7	90.6	89.0	85.6	70.1	84.1
Wine (litres)	8.2	10.8	..	12.1	24.4	11.8
Spirits (litres)	4.9	6.7	5.4	4.9	..	4.6

Source: Gallup Food and Farm Facts, Natural Resources Institute Finland, FAO - Statistics Division - Food Balance Sheet, Canadean, ICO (International Coffee Organization), The Finnish Food and Drink Industries' Federation, Federation of The Brewing and Soft Drinks Industry

<sup>1)</sup> in 2011

<sup>2)</sup> dairy products, excluding butter

<sup>3)</sup> the calculation bases were changed in 2007–2012

<sup>4)</sup> including berries

<sup>5)</sup> excluding fruit juice

<sup>6)</sup> since 2009 also private importing included

## AVERAGE DAILY INTAKE OF ENERGY-YIELDING NUTRIENTS AND FIBRE AND PERCENTAGE OUT OF THE TOTAL ENERGY INTAKE

	Intake per day		E% <sup>1)</sup>		Recommendation
	Men	Women	Men	Women	
Protein, g	95.0	72.0	17.3	17.2	10–20 E%
Fat <sup>2)</sup> , g	93.0	71.0	37.0	35.9	25–40 E%
Saturated fat <sup>3)</sup> , g	39.0	30.0	15.5	15.1	< 10 E%
Monounsaturated fat <sup>3)</sup> , g	36.0	27.0	14.5	13.8	10–20 E%
Polyunsaturated fat <sup>3)</sup> , g	17.2	13.4	6.9	6.9	5–10 E%
Carbohydrates, g	230.0	186.0	42.2	43.9	45–60 E%
Sucrose, g	51.0	43.0	9.2	10.0	≤ 10 E%
Fibre g/MJ	2.4	2.9			3 g/MJ
Energy, MJ (kcal)	9.4 (2 243)	7.3 (1 733)			

Source: The National Findiet 2012 Survey  
25–64 years old

Energy includes fibre and alcohol

<sup>1)</sup> percentage of nutrient intake out of the total energy intake

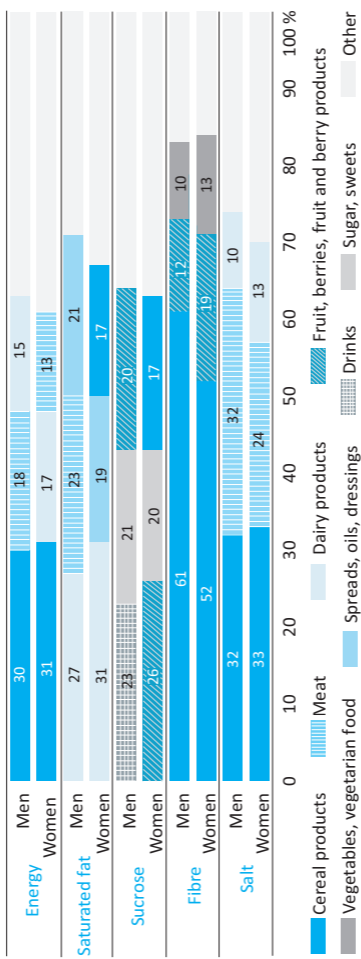
<sup>2)</sup> crude fat

<sup>3)</sup> as triglycerides



## MOST IMPORTANT SOURCES OF ENERGY AND NUTRIENTS

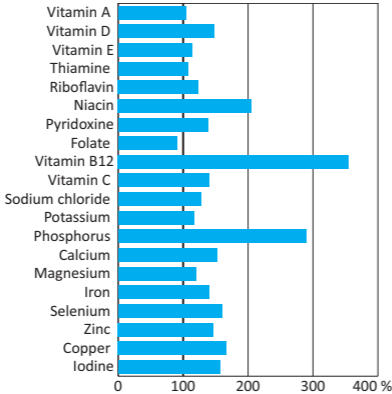
Nutrition



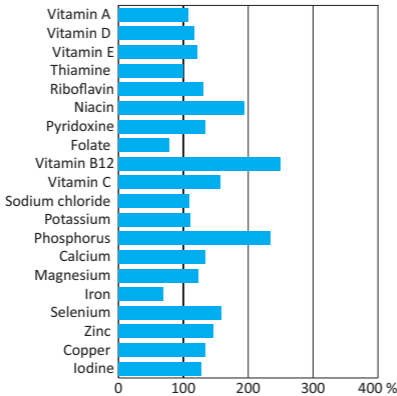
Source: The National FINDIET 2012 Survey  
25–64 years old

ACTUAL VITAMIN AND MINERAL INTAKE COMPARED TO THE RECOMMENDATIONS (% of recommendations)

Men



Women



Source: The National FINDIET 2012 Survey  
25–64 years old

## FINNS' DAILY MEALS (percentage)

Nutrition

### Children/teenagers <sup>4)</sup>

### Older people

### Working-age population

### Primary school <sup>5)</sup> Secondary school <sup>6)</sup> Upper secondary school/vocational school <sup>7)</sup>

	Primary school <sup>5)</sup>		Secondary school <sup>6)</sup>		Upper secondary school/vocational school <sup>7)</sup>		Working-age population		Older people	
	Boys	Girls	Boys	Girls	Boys	Girls	Men	Women	Men	Women
Breakfast	90	91	63 <sup>8)</sup>	67 <sup>8)</sup>	57	60	91	95	94	98
Lunch	96	94	85 <sup>8)</sup>	73 <sup>8)</sup>			84	86	79	84
Dinner	86	91	77 <sup>8)</sup>	67 <sup>8)</sup>			83	81	72	72
Snack <sup>1)</sup>	70	68	29 <sup>8)</sup>	35 <sup>8)</sup>			88	95	92	95
Evening snack	92	87	69 <sup>8)</sup>	64 <sup>8)</sup>			80	85	81	85
Drink as a meal <sup>2)</sup>							86	84	74	77
School meal			68	65	71	71				
Meal with family <sup>3)</sup>			48	42	41	37				

Sources: The National FINDIET 2012 Survey, Late-tutkimus, Kouluterveystutkimus 2013 (Late Study, School Health Study 2013)

<sup>1)</sup> for children, snack in the afternoon

<sup>2)</sup> meal that only consists of a drink

<sup>3)</sup> meal in the afternoon or evening when the family eats together

<sup>4)</sup> for children and teenagers, the meals eaten on weekdays

<sup>5)</sup> primary school classes 1 and 5

<sup>6)</sup> secondary school classes 8 and 9

<sup>7)</sup> 1st and 2nd year students at upper secondary and vocational schools

<sup>8)</sup> secondary school class 8

HEALTH BEHAVIOUR (%)	Adults <sup>1)</sup>	Pensioners <sup>2)</sup>
Index of diet quality		
Consumption of fruit and berries <sup>3)</sup>	32	37
Consumption of fresh vegetables <sup>3)</sup>	44	36
Use skimmed milk	41	30
Use mainly margarine or vegetable oil spread with bread	51	56
Alcohol consumption		
Never	13	25
At least once a week	33	29
Daily	3	4
Smoke daily	14	7
Overweight or obese <sup>4)</sup>	50	43
Sleep		
Less than 6 hours		4
6–8.9 hours		87
9 hours or more		9

Sources: Health Behaviour and Health among the Finnish Adult Population, Spring 2014, Health Behaviour and Health among the Finnish Elderly, Spring 2013, Finrisk 2012 Study

<sup>1)</sup> 15–64 years old, 2014 <sup>2)</sup> >65 years old, 2013 <sup>3)</sup> 6 or 7 days a week

<sup>4)</sup> for adults with a BMI of 25 or higher; for pensioners with a BMI of 27 or higher

#### LEVEL OF SELF-SUFFICIENCY IN FOOD PRODUCTS Locality

Ratio of production to consumption (%)	1994	2005	2013	2014
Bread grain	75	102	115	155
Dairy products, liquid milk	112	106	95	97
Beef and veal	111	89	81	81
Pork	113	116	100	99
Eggs	130	119	115	113
Sugar	68	83	39	51
Tomato	..	62	61	58
Cucumber	..	74	79	80
Carrot <sup>1)</sup>	..	94	92	92
Onion <sup>2)</sup>	..	80	92	92
Cauliflower	..	62	82	82
Strawberry	..	67	70	68
Raspberry	..	24	19	23
Apple <sup>3)</sup>	..	21	9	9
Apple (includes private gardening)	..	31	19	20

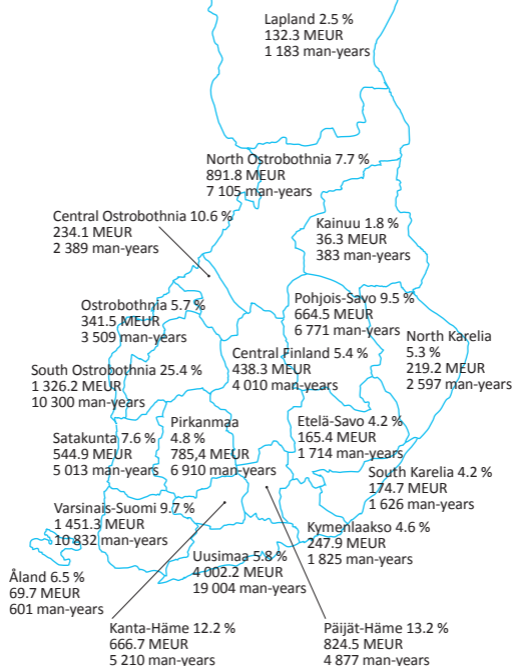
Sources: Gallup Food and Farm Facts, Finnish Horticultural Products Society, Finnish Association of Fruit and Berry Growers, National Board of Customs, The Central Union of Agricultural Producers and Forest Owners, Natural Resources Institute Finland

<sup>1)</sup> including turnip <sup>2)</sup> excluding garlic and leek

<sup>3)</sup> numbers are estimates (do not include private gardening)

## SHARE OF THE ECONOMY FOR FOOD PROCESSING IN THE REGIONS <sup>1)</sup>

Finland, total 7,1 %  
13.2 billion euros  
95 860 man-years



Source: University of Helsinki, the Ruralia Institute

<sup>1)</sup> of gross domestic product

## FOOD MANUFACTURERS BY SECTOR

Economy

Sector	2000		2013		2014	
	< 20 people	≥ 20 people	< 20 people	≥ 20 people	< 20 people	≥ 20 people
Slaughter and meat processing	330	50	374	40	385	42
Fish processing	243	13	298	16	300	15
Processing of vegetables, berries and fruit	373	22	439	22	433	27
Dairy processing	108	42	81	31	89	32
Milling industry	145	8	124	16	128	14
Bakeries	991	110	879	86	874	78
Production of beverages	85	14	116	16	128	19
Processing of other foodstuffs	330	48	351	42	343	43
<b>Total</b>	<b>2 605</b>	<b>307</b>	<b>2 662</b>	<b>269</b>	<b>2 680</b>	<b>270</b>

Source: Food Finland theme group

## FOOD INDUSTRY KEY SECTORS

Economy

Sector	Gross value of production		Change		Raw		Value added		Change		Salaries		Employees total
	2012	11/12	11/12	%	2012	MEUR	2012	MEUR	11/12	%	2012	MEUR	
Slaughter and meat processing	2 757.5	7.1	1 564.9	0.7	508	287.6	7 596						
Dairy products and ice cream	2 739	1.7	1 689.4	1.5	435.3	219.9	4 845						
Fruit and vegetables	473.2	0.2	294.5	-4.3	128.8	62.3	1 634						
Fish products	311.1	8	227	33.1	68.1	29.3	830						
Edible oils and fats	228.9	-4.4	153.4	-11.4	35.7	12.4	270						
Milling products and starch	358	5.8	190.9	-22.0	52.8	28.7	496						
Malt	81.7	-8.5	56.8	28.6	17.8	7.5	168						
Animal fed	668	7.6	525.2	-1.5	88.6	34.3	788						
Alcoholic beverages	1 051.7	0.2	602.4	4.7	307.5	134.8	2 909						
Soft drinks, bottled water	90.4	8	47	-7.6	29.5	8.6	210						
Bakery products	1 069.6	-2.3	293.9	0.2	473.7	241.5	7 435						
Chocolate, cocoa and confect.	460	6.6	164.1	1.6	132.7	59.8	1 640						
Seasonings and stocks	87.9	10.8	57.9	0.8	18.5	10.7	311						
Convenience food	353.4	7.9	117.3	32.7	110.1	61.2	1 756						
Other foodstuff	859.6	13.9	429.1	8	190.7	66	1 627						
<b>Total</b>	<b>11 590</b>	<b>3.6</b>	<b>6 413.8</b>	<b>2.5</b>	<b>2 597.8</b>	<b>1 264.6</b>	<b>32 512</b>						

Source: Statistics Finland, regional and industrial statistics on manufacturing

## IMPORT AND EXPORT OF FOODSTUFFS

	Import MEUR			2014
	1995	2005	2013	
<b>Industrial products</b>				
Spirits, strong drinks + wines	99.5	267.8	327.8	341.4
Fats and oils	31.1	41.2	56.8	57.5
Fruit preserves	28.3	47.1	74.8	80.2
Honey	1.3	2.2	5.9	6.8
Coffee (instant and roasted)	11.3	19.7	64.5	59.0
Fish products	50.1	82.2	165.2	151.3
Fruit juices and extracts	9.1	13.0	17.3	13.4
Vegetable preserves	18.2	38.7	68.1	69.2
Soups	8.5	12.8	16.9	15.6
Babyfood	2.0	9.3	22.7	21.9
Meat	57.3	102.8	218.5	213.8
Meat products	12.1	41.6	111.2	112.7
Dairy products	63.6	178.8	407.3	411.6
Malt	1.7	0.4	4.1	1.0
Margarin	6.9	23.6	35.7	33.8
Frozen berries and vegetables	23.6	59.0	102.3	91.0
Juices	32.6	46.2	56.3	61.5
Milling industry products	1.4	3.0	8.8	12.5
Beer	7.4	20.6	38.3	36.6
Potato flour	0.5	1.6	0.5	0.5
Feed products	83.7	147.0	304.1	312.1
Mustard	1.0	4.7	3.8	2.5
Sugar and molasses	9.9	33.5	36.5	34.5
Sugarchemical products	3.5	6.4	4.8	4.1
Chocolate and sweets	90.9	134.7	210.1	213.1
Tomatosauce	5.8	13.9	23.1	23.2
Starch	69.5	82.0	120.2	108.0
Grain products	66.2	197.3	341.6	348.8
Soft drinks and mineral waters	4.0	33.5	47.4	48.0
Other foodstuffs	60.9	116.4	242.3	250.0
<b>Industrial products total</b>	<b>860.1</b>	<b>1 781.6</b>	<b>3 136.9</b>	<b>3 135.6</b>
<b>Agricultural products</b>				
Special vegetables <sup>1)</sup>	49.0	57.3	95.3	72.2
Fruits	146.7	220.3	302.5	309.4
Cocoa beans	0.2	0.0	0.1	0.2
Raw coffee	124.3	115.7	160.9	183.1
Fresh fish	14.4	65.6	189.5	196.5
Egg	0.1	1.3	2.4	3.1
Berries	2.6	5.7	14.6	15.8
Spices	4.4	6.8	12.4	12.9
Nuts	7.4	9.5	22.4	32.3
Raw sugar	17.7	26.7	82.2	51
Tea	6.9	11.4	14.7	13.9
Vegetables	62.5	113.6	192.4	195
Grain	37.2	28.5	38.5	33.8
Crabs	2.4	4.1	11.4	12.4
<b>Agricultural products total</b>	<b>475.6</b>	<b>666.7</b>	<b>1 139.3</b>	<b>1 131.6</b>
<b>All foodstuffs total</b>	<b>1 335.8</b>	<b>2 448.3</b>	<b>4 276.0</b>	<b>4 267.0</b>

Source: National Board of Customs, Finnish Food and Drink Industries' Federation

<sup>1)</sup> oilseeds and oilfruits, sugarbeet and sugarcane, other seeds and plant parts



Change 14/13	Export MEUR			2014	Change 14/13
	1995	2005	2013		
4.1	40.1	73.4	135.9	147.8	8.8
1.2	7.0	26.5	21.4	18.3	-14.5
7.2	2.6	3.9	4.9	4.4	-10.2
15.3	0.0	0.0	0.1	0.1	0.0
-8.5	21.9	8.0	28.7	30.6	6.6
-8.4	13.2	9.6	17.0	16.4	-3.5
-22.5	0.0	1.6	2.6	2.8	7.7
1.6	2.4	4.9	5.3	6.0	13.2
-7.7	0.4	0.4	2.3	1.1	-52.2
-3.5	7.4	4.9	9.3	9.6	3.2
-2.2	26.4	91.5	123.9	101.7	-17.9
1.3	11.4	8.5	9.7	12.4	27.8
1.1	161.9	303.1	523.8	464.4	-11.3
-75.6	15.7	21.9	16.1	15.5	-3.7
-5.3	30.7	32.7	7.0	7.0	0.0
-11.0	9.0	18.2	28.5	25.1	-11.9
9.2	13.0	2.1	3.3	3.8	15.2
42.0	4.3	7.7	28.4	29.1	2.5
-4.4	19.7	11.3	14.6	14.1	-3.4
0.0	0.2	0.5	0.4	0.5	25.0
2.6	15.0	21.7	46.1	50.9	10.4
-34.2	0.4	0.3	0.7	0.9	28.6
-5.5	9.6	18.7	27.3	24.6	-9.9
-14.6	13.4	81.5	0.0	0.0	0.0
1.4	94.9	86.3	103.4	103.4	0.0
0.4	6.6	0.3	1.0	1.4	40.0
-10.1	8.5	15.7	9.5	7.5	-21.1
2.1	44.1	53.4	79.3	87.9	10.8
1.3	7.4	4.8	19.8	8.3	-58.1
3.2	21.5	48.0	24.4	28.8	18.0
0.0	609.0	961.9	1 294.7	1 224.4	-5.4
-24.2	0.1	0.0	2.0	4.6	130.0
2.3	13.0	0.8	1.5	1.5	0.0
100.0	0.0	0.0	0.0	0.0	0.0
13.8	2.3	0.0	11.0	11.7	6.4
3.7	2.1	3.3	23.9	21.6	-9.6
29.2	7.1	6.6	11.8	12.4	5.1
8.2	0.8	0.2	2.7	3.2	18.5
4.0	1.5	1.9	6.9	8.2	18.8
44.2	0.1	0.0	0.2	0.3	50.0
-38.0	0.0	0.8	1.1	1.2	9.1
-5.4	3.4	0.7	1.3	1.1	-15.4
1.4	7.2	3.9	5.4	6.1	13.0
-12.2	35.8	42.3	130.4	160.0	22.7
8.8	0.7	0.2	0.4	0.4	0.0
-0.7	74.0	60.9	198.6	232.3	17.0
-0.2	683.1	1 022.8	1 493.3	1 456.7	-2.5

The numbers of the table are rounded, the sum total tells the real total value of the export and the import

## FOOD EXPORTS BY COUNTRY

Economy

1995	%	2005	%	2013	%	2014	%
Russia	29.5	Russia	19.7	Russia	28.9	Russia	21.4
Sweden	14.2	Sweden	15.4	Sweden	18.5	Sweden	20.6
Estonia	6.9	Estonia	9.2	Estonia	9.1	Estonia	9.8
Germany	5.1	U.S.	5.9	Germany	4.9	Germany	4.4
Belgium	4.4	Germany	5.3	China	3.6	China	3.5
Norway	3.7	UK	4.4	Denmark	2.7	U.S.	3.3
U.S.	3.6	Poland	3.2	Norway	2.6	Denmark	3.1
UK	3.4	Norway	2.9	U.S.	2.6	The Netherlands	3.1
Denmark	3.2	Denmark	2.8	UK	2.4	Norway	2.9
Netherlands	2.8	France	2.8	Poland	2.4	Poland	2.7
Others	23.2	Others	28.4	Others	22.2	Others	25.2
Total	100	Total	100	Total	100	Total	100

Source: National Board of Customs, Finnish Food and Drink Industries' Federation

## FOOD EXPORTS BY COUNTRY AND PRODUCT GROUP, EXPORTS 2014

	Russia	1 000 €	Sweden	1 000 €	Estonia	1 000 €
Cheese	84 168		Yoghurt	30 369	Alcoholic beverages	25 710
Butter and other fats and oils derived from milk	45 936		Alcoholic beverages	27 782	Fish, fresh	13 694
Compound feedingstuffs	20 213		Chocolate	26 571	Coffee, roasted	12 679
Milk and cream	11 792		Other milk products	25 398	Other foodstuffs	12 599
Alcoholic beverages	11 437		Milk and cream	22 795	Beer	7 256
Other milk products	10 445		Other bakery products	13 318	Chocolate	6 975
Other bakery products	10 266		Animal and vegetable fats	12 096	Fish, frozen	5 603
Chocolate	9 331		Sweets	11 639	Poultry	4 694
Other cereal products	8 823		Butter and other fats and oils derived from milk	10 397	Pork	3 936
Coffee, raw	8 447		Other meat and offal	7 833	Wheat flour	3 057
Malts	8 303		Pork	7 358	Fish, dried, salted, smoked	3 043
Yoghurt	8 101		Milk powder	6 415	Birds' eggs	2 849
Other grain mill products	7 836		Cheese	5 978	Granulated sugar	2 782
Fish, frozen	4 114		Birds' eggs	5 747	Sweets	2 182
Bread	3 930		Berries, frozen	5 361	Other bakery products	2 017
Milk powder	3 877		Sausages	5 034	Milk powder	1 923
Beer	3 446		Modified starch	4 846	Cheese	1 687
Coffee, roasted	3 237		Other meat products	4 806	Coffee, raw	1 631
Poultry	3 177		Beef	4 301	Margarine	1 626
Soft drinks	3 001		Barley	3 893	Barley	1 594
Other	39 979		Other	56 894	Other	24 981
Total	309 859		Total	298 831	Total	142 518

Source: National Board of Customs, Finnish Food and Drinks Industries' Federation

## THE SHARE OF FOOD INDUSTRY'S R&amp;D COSTS

(% of production)



Source: Statistics Finland, OECD Main Science and Technology Indicators

## CONSUMPTION EXPENDITURE

Private consumption expenditure at current prices, MEUR	1995	2005	2013	2014
Food and non-alcoholic beverages	7 411	9 381	13 529	13 736
Share of food and non-alcoholic beverages in consumption expenditure, %	15	12	13	13
Alcoholic beverages and tobacco	2 976	4 052	4 967	5 023
Clothing and footwear	2 218	3 771	4 765	4 685
Housing and energy	11 889	19 253	28 576	29 806
Household equipment	2 132	4 147	5 341	5 384
Health	1 631	3 367	4 643	4 717
Transport	5 924	10 438	13 026	12 969
Telecommunications	780	2 185	2 459	2 464
Recreation and culture	5 087	9 094	11 791	11 683
Education	228	333	410	409
Hotels, cafés and restaurants	3 383	5 259	6 625	6 682
Other goods and services	4 709	7 074	9 907	10 301

Source: Statistics Finland, National Accounts

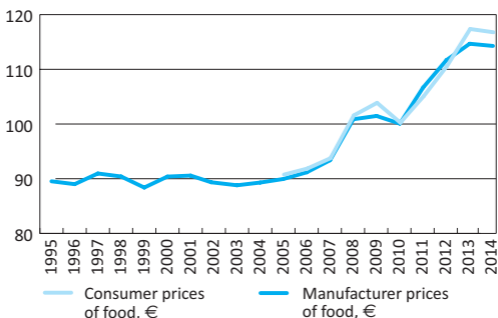
## FOOD EXPENDITURE

Food expenditure of households, per capita	1995		2005		2013		2014	
	€/y	%	€/y	%	€/y	%	€/y	%
Bread and cereal products	232	17	301	18	380	16	380	16
Meat and meat products	311	23	359	21	492	21	481	20
Fish and fish products	58	4	73	4	115	5	117	5
Milk, cheese and eggs	248	18	308	18	463	20	469	20
Fats and oils	42	3	39	2	51	2	46	2
Fruits and vegetables	190	14	287	17	422	18	437	19
Potatoes and potato products	45	3	45	3	54	2	53	2
Sugar	21	2	14	1	15	1	15	1
Coffee, tea and cocoa	69	5	45	3	70	3	72	3
Other goods <sup>1)</sup>	150	11	203	12	272	12	279	12
<b>Total</b>	<b>1 365</b>	<b>100</b>	<b>1 674</b>	<b>100</b>	<b>2 334</b>	<b>100</b>	<b>2 349</b>	<b>100</b>

Source: Statistics Finland, National Accounts

<sup>1)</sup> other drinks are not included

## REAL PRICE DEVELOPMENT OF FOOD IN FINLAND



Source: Statistics Finland

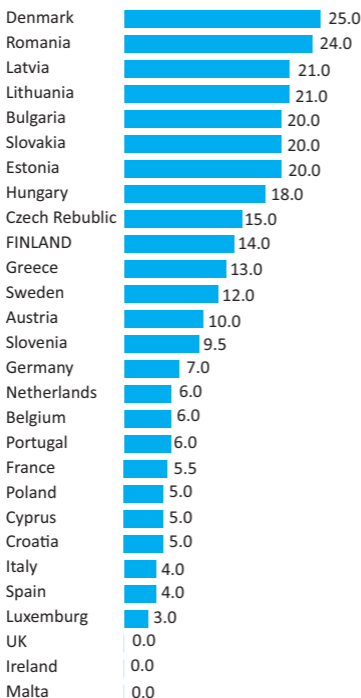
## RETAIL PRICES

Prices, €/kg, €/l	1994	2005	2013	2014
<b>Milk</b>				
low-fat milk	0.66	0.74	1.05	1.1
fat free milk	0.58	0.72	0.97	1.01
sour milk <sup>1)</sup>	0.58	0.89	1.33	1.33
<b>Cheese</b>				
Emmentaler	8.34	10.59	14.13	14.02
Edam	7.03	7.92	9.69	9.8
<b>Fat</b>				
butter	5.28	4.96	6.12	5.74
margarine	3.73	2.87	3.85	3.9
<b>Meat</b>				
roast of beef <sup>2)</sup>	11.16	9.08	16.88	16.74
minced beef	7.86	7.44	10.68	10.2
pork escalope <sup>3)</sup>	7.59	7.89	..	..
broiler fillet <sup>4)</sup>	4.10	2.03	13.75	13.47
salami	15.86	12.19	15.8	15.88
frankfurter (skinless)	5.82	4.68	7.94	7.89
sausage	3.70	3.43	4.8	4.94
<b>Eggs</b>	2.79	2.33	4.25	3.68
<b>Fish</b>				
rainbow trout <sup>5)</sup>	5.84	10.45	16.14	16.85
<b>Grain and vegetable products</b>				
wheat flour	0.90	0.59	0.69	0.68
rye bread	2.79	3.15	..	..
wheat bread	..	3.57	3.88	3.90
wheat coffee bread	5.63	5.79	7.39	7.19
granulated sugar	1.23	1.08	1.13	1.08
food potatoes	1.52	0.65	0.94	0.87
carrots	1.56	1.21	1.92	1.65
tomatoes	2.39	2.98	3.08	3.25
roasted coffee	5.56	5.04	7.12	7.18

Source: Statistics Finland

<sup>1)</sup> price calculations for 1994 based on fat free sour milk<sup>2)</sup> the average price for 1994 calculated from topside<sup>3)</sup> price calculations for 1994 based on pork chop<sup>4)</sup> price calculations for 1994 based on broiler, drumstick-thigh<sup>5)</sup> price calculations for 1994 based on cleaned and gutted whole fish and for 2005–2014 on filleted fish

## THE MOST COMMON VALUE-ADDED TAX ON FOOD IN THE EU-COUNTRIES 2014 (%)



■ EU 28-average  
-countries overall 10.7 %

Source: European Commission

PRICE INDEXES 2013 (EU15=100)

Economy

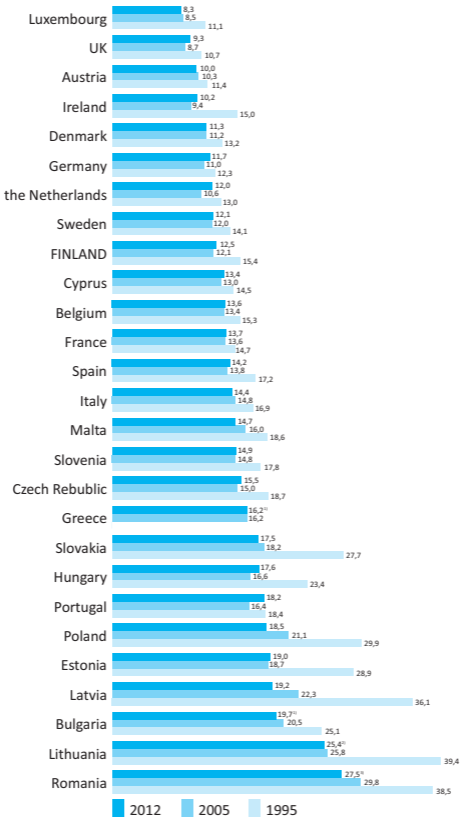
	Household consumption expenditure	Food and non-alcoholic beverages	Food and grain products	Bread and meat products	Meat and fish products	Fish and fish products	Milk, cheese and eggs	Fats and oils	Fruit, vegetables and potatoes	Other food-stuffs	Non-alcoholic beverages
Netherlands	106.3	91.3	91.5	84.4	106.9	97.8	89.6	79.3	91.4	86.1	89.7
Belgium	106.8	105.3	105.6	103.6	109.2	120.5	107.7	110.0	97.7	106.3	101.8
Spain	86.4	88.1	88.5	105.6	75.3	87.4	89.0	91.7	90.1	98.7	84.0
Ireland	114.7	110.4	108.9	102.6	100.9	107.7	113.7	97.9	125.2	112.2	126.2
UK	106.1	94.8	93.1	83.1	87.9	92.1	97.6	97.8	104.8	96.4	111.6
Italy	96.0	105.4	106.5	107.6	103.9	112.1	121.5	101.5	96.2	114.6	93.9
Austria	104.9	115.1	115.6	129.6	122.8	123.8	98.4	118.6	115.1	109.1	111.7
Greece	80.0	95.2	94.5	102.1	81.8	109.4	125.1	115.1	69.8	117.4	103.6
Luxembourg	127.5	111.6	113.6	111.7	119.6	125.5	115.4	112.1	111.6	105.7	99.7
Portugal	73.6	85.3	84.8	93.7	68.0	75.8	99.8	95.1	85.4	109.9	90.9
France	103.5	101.8	102.7	99.4	111.6	107.0	93.1	94.4	107.9	97.3	93.2
Sweden	130.0	117.9	117.6	127.3	116.9	113.7	111.5	113.1	129.4	112.5	121.1
Germany	95.5	101.8	101.8	99.7	118.2	108.5	91.3	101.3	102.2	93.5	101.7
Finland	115.8	116.0	115.5	126.3	112.2	114.9	115.8	105.9	117.3	111.5	120.7
Denmark	132.9	132.6	128.0	148.6	115.6	122.7	111.3	134.3	120.4	166.9	177.7
EU-15	100	100	100	100	100	100	100	100	100	100	100

Source: Eurostat/ Suomen Gallup Elintarviketieto Oy



## HOUSEHOLDS CONSUMPTION OF FOOD AND NON-ALCOHOLIC BEVERAGES

% from households total consumption



Source: CIAA, Gallup Food and Farm Facts

<sup>1)</sup> in 2011 <sup>2)</sup> in 2009 <sup>3)</sup> in 2010

## MEAT

Million kg	1995	2005	2013	2014
<b>Pork</b>				
total production	166	204	195	186
consumption	165	176	194	189
exports <sup>1)</sup>	9	40	35	30
imports <sup>1)</sup>	10	15	33	34
<b>Beef and veal</b>				
total production	95	87	81	83
consumption	96	98	100	102
exports <sup>1)</sup>	6	2	2	2
imports <sup>1)</sup>	8	14	24	21
<b>Poultry meat</b>				
production	43	87	111	113
consumption	45	84	106	110
exports <sup>1)</sup>	3	10	22	20
imports <sup>1)</sup>	0.3	7	17	18
<b>Mutton</b>				
production	2.0	0.6	1	1.1
consumption	2.0	1.9	3.4	3.7
exports <sup>1)</sup>	0.0	0.0	0.1	0.1
imports <sup>1)</sup>	1.0	1.4	2.6	2.7
<b>Horse meat</b>				
production	0.4	0.1	0.5	0.5
<b>Meat total</b>				
production	306	378	388	384
consumption	308	361	406	407
exports <sup>1)</sup>	15	52	58	52
imports <sup>1)</sup>	21	39	78	78
<b>Meatproducts export</b>	<b>3.7</b>	<b>2.1</b>	<b>1.5</b>	<b>2.1</b>

Source: Gallup Food and Farm Facts, Natural Resources Institute Finland, National Board of Customs

<sup>1)</sup> estimated meat in carcass

## MILK PRODUCTS AND EDIBLE FATS

	1995	2005	2013	2014
Milk (M litres)				
production	2 397	2 362	2 260	2 330
yield litres/cow	5 981	7 505	7 977	8 201
received at dairies	2 296	2 293	2 220	2 289
consumption of liquid milk products	1 012	995	987	976
Butter (M kg)				
production	45	50	44	49
consumption	27	14	20	19
exports	19	37	24	27
Cheese (M kg)				
production	96	97	102	99
consumption	78	98	135	141
exports	29	37	46	33
Milk powder, exports (M kg)	7	15	22	27

Source: Gallup Farm and Food Facts, Natural Resources Institute Finland

## BREAD GRAIN

<b>Wheat</b>	<b>1995</b>	<b>2005</b>	<b>2013</b>	<b>2014</b>
Total yield (M kg)	379.5	801.3	869.4	1088.2
First grade product <sup>1)</sup> , %	..	32	58	37
Imports (M kg)	131.6	23.2	11.4	4.7
Exports (M kg)	8.4	25.5	163.5	175.0
Consumption (M kg)				
- gross	306.1	338.3	333.6	335.1
- net	229.5	253.7	250.2	251.4
<b>Rye</b>				
Total yield (M kg)	57.7	32.4	25.7	74.9
First grade product <sup>2)</sup> , %	..	28	73	84
Imports (M kg)	61.4	80.4	56.5	56.0
Exports (M kg)	..	2.4	0.2	4.2
Consumption (M kg)				
- gross	80.9	90.0	87.0	82.8
- net	79.2	88.2	85.3	81.2

Source: Natural Resources Institute Finland, National Board of Customs

<sup>1)</sup> hectolitre weight  $\geq 78,0$  kg, falling number  $\geq 180$ , protein (N\*5,7)  $\geq 12,5$  %

<sup>2)</sup> hectolitre weight  $\geq 71,0$  kg, falling number  $\geq 120$

## FISH

<b>Fish caught, million kg <sup>1)</sup></b>	<b>1995</b>	<b>2005</b>	<b>2013<sup>3)</sup></b>	<b>2014<sup>3)</sup></b>
Baltic herring ( <i>Clupea harengus</i> membras)	96	67	122	131
Vendace ( <i>Coregonus albula</i> )	4	5	4	4
Lavaret ( <i>Coregonus lavaretus</i> )	6	3	2	2
Atlantic salmon ( <i>Salmo salar</i> )	2	1	0,4	0,4
European perch ( <i>Perca fluviatilis</i> )	17	13	8	8
Pike-perch ( <i>Sander lucioperca</i> )	2	3	4	4
Commercial fishing, total	111	94	143	153
Recreational fishing, total	57	38	25	25
Fish farming	17	14 <sup>2)</sup>	14	13

Source: Natural Resources Institute Finland

<sup>1)</sup> the species named are the most important for commercial fishing (recreational fishing included)

<sup>2)</sup> share of rainbow trout more than 90%

<sup>3)</sup> recreational fishing and commercial inland fishing figures are from year 2012

## FISH CONSUMPTION

<b>Domestic fish (kg/person)</b>	<b>2000</b>	<b>2005</b>	<b>2012</b>	<b>2013</b>
Farmed rainbow trout ( <i>Oncorhynchus mykiss</i> )	1.6	1.4	1.0	1.1
Baltic herring ( <i>Clupea harengus membras</i> )	1.2	0.7	0.3	0.3
Pike ( <i>Esox lucius</i> )	0.7	0.7	0.4	0.4
European perch ( <i>Perca fluviatilis</i> )	0.7	0.6	0.4	0.4
Vendace ( <i>Coregonus albula</i> )	0.7	0.7	0.6	0.6
Lavaret ( <i>Coregonus lavaretus</i> )	0.4	0.3	0.3	0.3
Pike-perch ( <i>Sander lucioperca</i> )	0.2	0.3	0.3	0.3
Other domestic fish	0.6	0.5	0.5	0.4
<b>Imported fish (kg/person)</b>				
Farmed rainbow trout ( <i>Oncorhynchus mykiss</i> )	0.3	0.6	1.0	0.9
Farmed Atlantic salmon ( <i>Salmo salar</i> )	0.9	1.9	4.2	4.0
Tuna ( <i>Thunnus thynnus</i> ) (preserved and prepared)	1.2	1.6	1.6	1.9
Saithe ( <i>Pollachius virens</i> ) (frozen fillets)	0.6	0.4	0.5	0.3
Shrimps and prawns	0.4	0.5	0.6	0.6
Herring ( <i>Clupea harengus</i> ) and preserved herring	0.5	0.5	0.3	0.4
Other imported fish	2.3	2.4	2.7	2.7

Source: Natural Resources Institute Finland

Domestic fish consumption (kg/person) as filleted weight.

Imported fish consumption (kg/person), with Atlantic salmon and

rainbow trout as filleted weight, others as product weight.

Imported freshwater fish (such as lavaret, pike-perch etc.) not reported by species included under 'other imported fish'.

## EGGS

<b>Million kilos</b>	<b>1995</b>	<b>2005</b>	<b>2013</b>	<b>2014</b>
Production	74.7	58.2	67.4	67.7
Consumption	61.0	48.8	58.1	59.3
Exports	14.0	11.2	11.5	11.2

Source: Gallup Farm and Food Facts

## VEGETABLES AND FRUIT

<b>1 000 kg</b>	<b>1995</b>	<b>2005</b>	<b>2013</b>	<b>2014</b>
Potato				
exports	2 895	4 853	8 499	12 349
imports	3 909	19 304	20 757	15 524
Tomato				
exports	2 368	58	173	114
imports	16 130	19 471	27 823	29 428
Yellow and red onion				
exports	400	3	20	130
imports	5 357	5 233	12 654	11 420
Cauliflower				
exports	75	0	1	..
imports	2 166	2 407	3 087	3 280
White and red cabbage				
exports	2 447	3	58	236
imports	1 660	1 608	2 352	2 614
Head lettuce				
exports	104	35	221	122
imports	5 672	11 056	18 068	18 699
Carrots and turnips				
exports	1	21	19	53
imports	2 643	4 816	9 442	6 557
Cucumber				
exports	498	66	0,4	38
imports	11 107	11 256	9 932	11 307
Pepper				
exports	354	5	10	21
imports	5 438	9 538	14 422	15 360
Zucchini				
exports	17	0	..	..
imports	710	2 118	..	..
Other fresh vegetables				
exports	7 372	1 552	595	708
imports	33 385	61 227	81 834	82 948
Banana				
exports	2 352	0	..	..
imports	6 619	65 491	..	..
Citrus fruit				
exports	3 968	91	134	62
imports	62 100	63 749	71 424	72 107
Apple				
exports	11 480	100	141	65
imports	54 001	49 719	44 575	45 613
Other fresh fruit				
exports	15 181	472	1 831	1 903
imports	151 112	108 370	124 012	133 259

Source: National Board of Customs

## BERRIES AND MUSHROOMS

<b>Total crops of garden berries, mill. kg</b>	<b>2005</b>	<b>2010</b>	<b>2013</b>	<b>2014</b>
Strawberry	10.1	10.3	13.2	12.9
of which organic	..	0.19	0.22	0.25
Black- and greencurrant	1.8	1.0	1.5	1.1
Red- and whitecurrant	0.5	0.4	0.4	0.6
Raspberry	0.6	0.5	0.7	0.8
of which organic	..	0.01	0.02	0.01
Gooseberry	0.03	0.06	0.05	0.04
<b>Total</b>	<b>13.1</b>	<b>12.5</b>	<b>16.1</b>	<b>15.6</b>
<b>Supply of wild berries, 1 000 kg</b>				
Blueberry	3 111	2 780	5 008	5 866
of which organic	..	1 036	856	3 044
Lingonberry	8 544	6 057	10 746	2 981
of which organic	..	1 232	757	759
Cloudberry	321	152	146	162
of which organic	..	1	5	90
Other berries	51	108	67	81
<b>Total</b>	<b>12 027</b>	<b>9 097</b>	<b>15 968</b>	<b>9 090</b>
<b>Supply of wild mushrooms, 1 000 kg<sup>1)</sup></b>				
Chanterelle	16	5	11	10
Cep	181	747	238	369
Milk caps	152	98	51	82
Other wild mushrooms	77	5	10	28
<b>Total</b>	<b>426</b>	<b>855</b>	<b>309</b>	<b>489</b>

Source: Natural Resources Institute Finland, Gallup Food and Farm Facts, Finnish Association of Fruit and Berry Growers, Agency for Rural Affairs

<sup>1)</sup> weighted fresh

## NON-COMPLIANT FOODS 2014

<b>Inspected foods</b>	<b>Inspected batches<sup>1)</sup>, number</b>	<b>Non-compliant batches %</b>	<b>Batches issued a notice %</b>
Vegetables and mushrooms	678	6.2	6.6
Vegetable products	114	11.4	10.5
Fruit and berries	698	3.6	5.0
Fruit products	61	4.9	4.9
Nuts, almonds and products	176	5.1	8.5
Juices and drinks	159	8.2	27.7
Cereal and bakery products	324	7.1	9.6
Sweets, sugar and honey	79	3.8	6.3
Spices and spice products	224	16.5	11.6
Cocoa products, coffee and tea	187	15.5	12.8
Sauces, soups and broths	153	13.7	14.4
Food supplements	95	23.2	23.2
Dietetic products	48	22.9	14.6
Baby foods	66	3.0	7.6
Other foods	267	10.9	13.5
<b>Total</b>	<b>3 329</b>	<b>8.5</b>	<b>10.0</b>

Source: Customs Laboratory

<sup>1)</sup> 51% of the batches were from countries outside the EU, 46% from the EU, and the origin of 3% of the batches was unknown.



## CAUSES OF NON-COMPLIANCE 2014

<b>Cause of non-compliance</b>	<b>Number of batches</b>	<b>%</b>
Labelling	114	32.9
Plant protection products	68	19.6
Additives	43	12.4
Food product composition	27	7.8
Comparison between composition and legislation	18	5.2
Other analyses <sup>1)</sup>	17	4.9
Microbiological causes	12	3.5
Mycotoxins	12	3.5
Irradiation	10	2.9
Plasticisers	8	2.3
Allergens	7	2.0
Contaminants <sup>2)</sup>	7	2.0
Minerals	4	1.2
GMO	0	0.0
Heavy metals	0	0.0
Can inspection	0	0.0
Meat type recognition	0	0.0
Radioactivity	0	0.0
Vitamins	0	0.0
<b>Total</b>	<b>347</b>	<b>100</b>

Source: Customs Laboratory

<sup>1)</sup> includes e.g. inspection of documents

<sup>2)</sup> PAH, MCPD, histamine, nitrate, melamine

## VETERINARY MEDICINAL PRODUCT RESIDUES AND OTHER SUBSTANCES IN LIVE ANIMALS AND ANIMAL PRODUCTS

	<b>EU-27 average</b>		<b>Finland</b>		
	<b>2010</b>	<b>2012</b>	<b>2010</b>	<b>2012</b>	<b>2014</b>
Number of targeted samples	418 081	427 195	4 344	4 424	4 324
Non-compliant samples %	0.33	0.25	0.0	0.02	0.0

Source: EFSA and Finnish Food Safety Authority Evira

Contaminants are prohibited substances, permissible medicinal products and contaminants from the environment. The EU results include all samples examined in the programme, including contaminants from the environment. The results for Finland take into account the residues of prohibited substances and permissible medicinal products but not all results that exceed the limit, such as heavy metals found in game.

## FOOD CONTROL FIGURES 2014

Product safety

Inspections, number	Primary production	Manufacture and packaging	Distribution and transport	Retail sales	Service sector	Manufacturers selling primarily on a retail basis	Total
Number of establishments	31 337	3 085	2 690	9 477	32 012	0	78 601
Number of establishments inspected	1 623	1 759	584	4 204	7 794	0	15 964
Number of inspections	1 909	4 568	903	7 722	30 230	0	45 332
Number of establishments committing infringements	626	331	59	504	2 407	0	3 927
<b>Type of infringement</b>							
Hygiene (HACCP, training)	300	106	14	125	655	0	1 200
General hygiene	502	359	52	770	5 030	0	6 713
Composition	5	14	1	3	0	0	23
Contamination (other than microbiological)	109	30	0	2	38	0	179
Labelling and presentation	16	48	9	120	26	0	219
Other	189	18	1	13	51	0	272

Source: Finnish Food Safety Authority Evira, Report on the implementation of the Multi-annual National Food Chain Control Audit Plan 2012–2016 in 2014

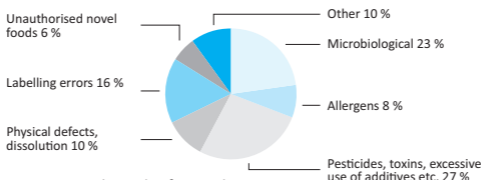
## NUMBER OF RECALLS

	2005	2010	2013	2014
Recalls <sup>1)</sup> , number	28	84	134	120

Source: Finnish Food Safety Authority Evira

<sup>1)</sup> incl. both retailer and mass caterer recalls

## REASONS FOR PRODUCT WITHDRAWALS 2014



Source: Finnish Food Safety Authority Evira

## FOODBORNE AND WATERBORNE OUTBREAKS AND NUMBER OF PERSONS AFFECTED 2014

Disease-causing agent	Number of outbreaks	Number of persons affected	
	N=42	N=990	%
<b>Foodborne</b>			
Bacillus cereus	2	55	8
Campylobacter jejuni	1	22	3
Clostridium perfringens	1	67	10
Hepatitis A virus	1	12	2
Histamine	1	23	3
Lectin	1	12	2
Norovirus	8	203	29
Yersinia pseudotuberculosis (+Campylobacter jejuni)	1	55	8
Unknown	20	253	36
<b>Total</b>	<b>36</b>	<b>702</b>	<b>100</b>
<b>Waterborne</b>			
Campylobacter jejuni	1	96	33
EHEC O103 (+Campylobacter jejuni, EPEC, ETEC)	1	9	3
Norovirus	1	76	26
Unknown	3	107	37
<b>Total</b>	<b>6</b>	<b>288</b>	<b>100</b>

Source: Finnish Food Safety Authority Evira

## FOODBORNE AND WATERBORNE OUTBREAKS BY DISEASE-CAUSING AGENT 2014

Disease-causing agent	Unknown or several foodstuffs	Vegetables and vegetable products	Fish and fish products	Milk and milk products	Drinks	Eggs and egg products	Meat and meat products	Cereals and cereal products	Bakery products	Total
Bacillus cereus	1	1								2
Campylobacter jejuni		1								1
Clostridium perfringens		1								1
Yersinia pseudotuberculosis (+ Campylobacter jejuni)					1					1
Hepatitis A virus			1							1
Norovirus	5		2	1						8
Histamine				1						1
Lectin						1				1
Unknown	19	1								20
Total	25	4	3	2	1	1	0	0	0	36
%	69	11	8	6	3	3	0	0	0	100

Source: Finnish Food Safety Authority Evira

## DAILY CONSUMER GOODS TRADE AND INSTITUTIONAL KITCHENS

*Economy*

### NUMBER OF SHOPS BY SHOP TYPE

<b>Shop type</b>	<b>Total 1.1.2015</b>
Hypermarkets	150
Department stores	115
Supermarkets, large	621
Supermarkets, small	402
Self-service shops, large	1 065
Self-service shops, small	394
Small shops	410
Speciality shops	910
Market halls	34
<b>Total 1.1.2015</b>	<b>4 101</b>
Mobile shops	14
Closed down	167

Source: A.C. Nielsen Finland Oy

*Economy*

### SALES OF DAILY CONSUMER GOODS BY SHOP TYPE

<b>MEUR</b>	<b>1996</b>	<b>2005</b>	<b>2013</b>	<b>2014</b>
Hypermarkets <sup>1)</sup>	1 533	2 772	4 524	4 519
Department stores	655	611	567	571
Supermarkets, large	1 847	3 789	5 775	6 019
Supermarkets, small	2 118	1 648	1 871	1 783
Self-service shops, large	1 401	1 916	2 601	2 628
Self-service shops, small	766	490	456	438
Small shops	131	216	338	346
Speciality shops and market halls	148	158	268	296
<b>Total</b>	<b>8 599</b>	<b>11 601</b>	<b>16 399</b>	<b>16 599</b>
Mobile shops	52	18	7	6
Closed down	114	289	145	100
<b>Total</b>	<b>8 765</b>	<b>11 908</b>	<b>16 551</b>	<b>16 705</b>

Source: A.C. Nielsen Finland Oy

<sup>1)</sup> classification has been chain-based since 2005, including chains K-City-market, Prisma and Euromarket

## NUMBER OF INSTITUTIONAL KITCHENS BY SECTOR

	2009 pcs	2011 pcs	2013 pcs	Change 11/13 %
Cafés and restaurants	10 429	11 211	11 229	0.2
Workplace canteens	1 349	1 360	1 242	-8.7
Public kitchens	4 530	4 116	3 835	-6.8
Total	16 308	16 687	16 315 <sup>1)</sup>	-2.2

Source: Taloustutkimus Oy

<sup>1)</sup> the figure includes some institutional kitchens, the field of operations of which are not known

## NUMBER OF PORTIONS PREPARED IN INSTITUTIONAL KITCHENS (BY SECTOR)

Million portions	2009	2011	2013	Change 11/13 %
Cafés and restaurants	345	398	416	4.5
Workplace canteens	63	72	70	-2.8
Public kitchens	441	419	411	-1.9
Total	850	889	904 <sup>1)</sup>	1.7

Source: Taloustutkimus Oy

<sup>1)</sup> the figure includes some institutional kitchens, the field of operations of which are not known

In 2014, the share of organic products in public catering services was approx. 5 % (in kg).

Source: EkoCentria, Taloustutkimus Oy

Forkful of Facts can be ordered from Finnish Food Information by e-mail:  
tilaukset@ruokatieto.fi  
or by phone 040 710 4170.

The publication is free, but postage are charged  
(handling 5 €+ shipping costs).

Forkful of Facts 2015 - Food Industry Statistics -publication was produced by Finnish Food Information Association with the Finnish Association of Academic Agronomists, Finnish Food and Drink Industries' Federation, Central Union of Agricultural Producers, Association of ProAgria Cetres and the Central Union of Swedish-speaking Agricultural Producers in Finland. Valuable expert help has also been provided by Finnish Food Safety Authority Evira, MTT Agrifood Research Finland, Farmers' Social Insurance Institution Mela and the University of Helsinki. Finnish Food Information would like to extend warm thanks to all those who have provided assistance to it.

Finnish Food Information  
Helsinki 2015

# Ruokatieto

**FINNISH FOOD INFORMATION**

TEL. +358 40 710 4170

[www.ruokatieto.fi](http://www.ruokatieto.fi)



Finnish Association of Academic Agronomists  
TEL. +358 9 251 1160 — [www.agronomiliitto.fi](http://www.agronomiliitto.fi)



Finnish Food and Drink Industries' Federation  
TEL. +358 9 148 871 — [www.etl.fi](http://www.etl.fi)



Central Union of Agricultural Producers  
and Forest Owners  
TEL. +358 20 4131 — [www.mtk.fi](http://www.mtk.fi)



Central Union of Swedish-speaking  
Agricultural Producers in Finland  
TEL. +358 9 586 0460 — [www.sl.fi](http://www.sl.fi)



Association of ProAgria Centres  
TEL. +358 20 747 2400 — [www.proagria.fi](http://www.proagria.fi)